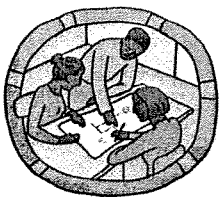


Preparing Yourself



A **Hurricane Watch** means it is time to put the early stages of your hurricane plan into effect. Review checklists and plans with your family. Advise out-of-area relatives or friends of your plans. Ask them to wait to hear from you after the storm and to spread the word to other relatives and friends. Consider your options. If an evacuation of your area is likely, do what is necessary before you leave. Fill your vehicle's gas tanks. Inspect your home and yard for loose items. Listen to local radio and TV for information. Get window and door covering ready and fill sterile containers with drinking water. If you feel comfortable doing so, move ahead with your plans. Install window protection and evacuate early. When winds reach 40 mph, bridges may close and high profile vehicles such as RV's and trailers will not be allowed on evacuation routes.



A **Hurricane Warning** means you should rush your plans to completion. Tropical storm force winds and heavy rain may begin to affect your area soon. If you live in a mobile or manufactured home or in an area threatened by rising water – evacuate. If you live in a site built home/condo and are not in a flood prone area, consider riding out the storm. If you decide to stay, look for alternatives. If part of the building is damaged, where will you go? What will you do if flooding is worse than expected? If you stay, there will come a time when you are “on your own”. Fire, law enforcement and ambulances will be unavailable once the winds reach 40 mph.

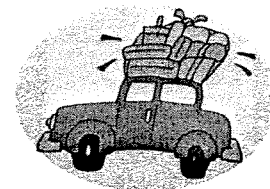
Knowledge about hurricanes is not enough to protect you and your family. You must put this information to work. If you have questions about your situation and your plan, ask now! Don't wait until the storm is nearly here, or it may be too late to get an answer! Review what you need to do to prepare and protect you, your family and your property. The following options will help you make the correct choice:



Option A – Stay at home. If your home can withstand the expected winds, is away from the coast and not in a flood prone area consider staying at home. Newer homes are constructed to withstand 110 mph winds. Homes built after March 1, 2002 must meet even more stringent wind requirements.

Option B – Stay with a relative or friend or in a hotel outside the evacuation area. If you expect to stay at someone else's home or a hotel, make advance arrangements. If staying at a friend or relative's home, be certain it is adequately prepared and is located in a safe area. Consider where you will go if the friend or relative is out of town.

Option C – Relocate out of the area. Emergency Management officials have developed hurricane sheltering and evacuation policies. Officials will issue local statements to inform you of recommended evacuation routes. Because you may have to travel considerable distances on unfamiliar roads, include a current road map as a part of your disaster supply kit.



Know where you are going and plan, not only the best route, but alternate routes also. If possible, leave early to avoid heavy traffic, possible flooding and high winds. If you wait until the Hurricane Warning to leave, you will find hotel rooms extremely scarce throughout Florida. If your household includes an ill or disabled person, check with their doctor for advice on needed accommodations.

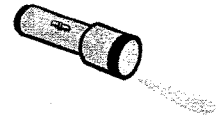
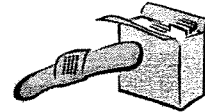
Option D – Public shelters. A Public shelter should be your last option and used only if you have no other safe place to go. Local radio and television will announce which shelters will be open and opening times. Do not report to a shelter until it is open. Familiarize yourself and family with the locations and routes from your home to the shelters. Do not wait until the last minute, if an evacuation order is given, move quickly but without panic.



72- HOUR DISASTER KIT

Every home should have a 72-Hour Disaster Survival kit. Ensure a minimum three-day (72 hours) supply for each person. Although hurricanes are our focus, other events could require evacuation. Brush fires, hazardous material spills, floods and tornados all have the potential to disrupt our daily activities. Here is a minimum suggested list of survival kit supplies.

- Canned or other non-perishable food
- Manual can-opener
- Drinking water - 1 gallon per person per day, (use sterile containers) other juices and soft drinks
- Baby needs; diapers, formula, etc.
 - Personal medications and prescriptions
 - First aid kit
 - Battery operated television or radio and flashlight
 - Extra batteries
 - Blankets, pillows, sleeping bags or lawn chairs
- Sanitary supplies
- Cards, books, small games
- Road maps
- Wet and cold weather clothing
- Pet foods



Gather important documents (birth certificates, insurance policies, health records, mortgages, deeds, titles, financial documents) in one place, ready to take with you. Any documents you may need after a storm or flood should be gathered now and kept in a protected place.

Lee County, Florida Division of Public Safety - Emergency Management/Emergency Operations Center
 Phone Number: 239-477-3600 Fax Number: 239-477-3636
 Mailing Address: PO Box 398 Ft. Myers, FL 33902-0398 Physical Address: 2665 Ortiz Ave. Ft. Myers, FL 33905

IMPORTANT TELEPHONE NUMBERS

Emergency - Sheriff, Fire, EMS (Medical Assistance)	911
Lee County Sheriff - Six Mile Cypress Parkway Office	477-1200
Lee County Sheriff - Bonita Springs Substation	495-4500
Lee County Sheriff - Marine Patrol	466-7768
Lee County Sheriff - South District	590-2200
Florida Highway Patrol	278-7100
Fort Myers Police Department	338-2111
Bonita Springs Fire Department	992-3320
Estero Fire Department	947-3473
Lee County Emergency Management	477-3600
Storm Information Hotline (only when activated)	477-1900
Collier County Emergency Management	774-8444
Charlotte County Emergency Management	743-1270
Florida Marine Patrol	334-8963
Florida Marine Patrol after 5:00 PM	1-800-324-5367
Florida Power and Light	334-7754
American Red Cross	278-3401
United Telephone Service and Repair	611
United Telephone Customer Service	1-800-699-0728
Bonita Springs Utilities	693-0081
US Coast Guard	463-5754
Weather Information	332-4030
Lee Convenient Care (Bonita Beach Road)	992-7000
Gulf Coast Hospital (Off Metro at Daniels)	768-5000
Lee Memorial Hospital Health Park Medical Center	433-7799
North Collier Hospital	597-1417
American Red Cross Lee County Chapter	278-3401
The Salvation Army in Fort Myers	278-1551
Lee County Health Department	332-9501
Lee County Humane Society	332-0364

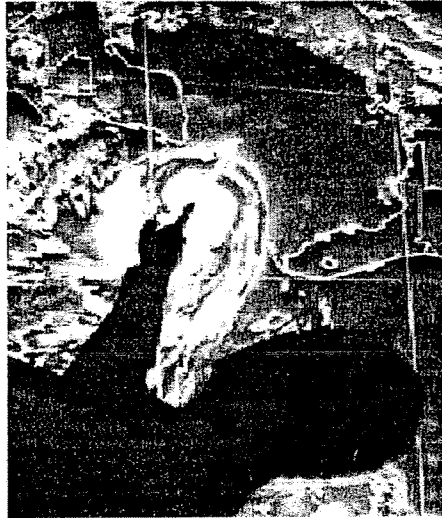
RADIO STATIONS	
AM Freq.	Radio Station
770	WVCN
1240	WINK
1270	WNOG
1350	WCRM
1410	WMYR
1440	W/WCL
FM Freq.	Radio Station
162.475	NOAA Weather
88.7	WAYJ
89.5	WSRX
90.1	WSFP
90.9	WSOR
92.1	WGCO
93.5	WPRW
94.5	WARD
95.3	WOLZ
96.1	WRXK
96.9	WINK
98.5	WDDR
98.9	WGLF
100.1	WFNS
101.1	WAVV
101.9	W/WGR
103.1	WSGL
103.9	WXXB
105.5	WONU
106.3	WJST
107.1	WCKT

TELEVISION STATIONS	
Station	Network
WBBH	NBC
W/SWF	WB
W/ZVN	ABC
W/FTX	FOX
W/INK	CBS
W/EVU	IND
W/GCU	PBS

PELICAN LANDING

INFORMATION

FOR STORM EMERGENCY



PELICAN LANDING STORM ADVISORY FLAGS
Posted at each gatehouse

YELLOW FLAG WATCH Tropical Storm Watch
of Hurricane Watch

RED FLAG WARNING Tropical Storm Warning
of Hurricane Warning

WHITE FLAG ALL CLEAR No Storm Threat



The Pelican Landing community is vulnerable to acts of nature, such as hurricanes and tornadoes.

STORM-SPEAK

Hurricane: A storm with sustained winds of at least 74 mph blowing counterclockwise around a calm center of low pressure. Wind gusts may exceed the sustained winds by 25 to 50 percent. Hurricanes are rated by their wind speed, with a Category 1 being the weakest hurricane (74 to 95 mph) and Category 5 being the most intense (over 155 mph). Hurricanes also can generate tornadoes of 150 to 300 mph.

Hurricane warning: A warning means that a hurricane is expected to strike within 24 hours. Residents must be ready to leave if local officials order an evacuation of their area.

Hurricane watch: When a watch is declared, hurricane conditions are possible and may threaten an area within 36 hours. When the watch is announced, the area affected and danger period will be specified. Voluntary evacuations may be encouraged at this stage.

Storm surge: Storm surge can be defined as the abnormal rise in water level caused by wind and pressure forces of a hurricane. It can be devastating and in fact is a major cause of damage from hurricanes. The storm surge itself is caused by the wind and pressure "pushing" the water into the continental shelf and onto the coastline. The height of a surge is basically measured as a deviation from the mean sea level in the area, and in some historical storms, this value has reached over 20 feet.

Tropical depression: A low-pressure front with a rotary circulation of clouds and winds up to 39 mph.

Tropical disturbance: A large area of rain and clouds with no circulating winds.

Tropical storm: A storm with a distinct rotation of winds around a center of low pressure with a barometric reading of 29.4 inches or lower. When sustained winds reach 39 mph or higher, the storm is given a name by the National Hurricane Center in Miami.

Rainfall may equal or exceed that of some hurricanes, and tides may be several feet higher than normal. Wind gusts may reach hurricane velocity of 74 mph or more and, depending on tides and other conditions, damage may be just as severe as that caused by a hurricane.

Tropical wave: A weak, low-pressure front moving westward in the trade winds. Clouds and rain are linked to the wave, but it has no wind circulation. May be short-lived or move up to 3,000 miles without change.

Staff Release Criteria

When a **Tropical Storm or Hurricane** is predicted to strike the Southwest Florida coastal area within 48 hours and this strike area encompasses the Pelican Landing property, the WCI/PLCA Emergency Management Team and essential emergency staff will continue to operate, as required, **until the storm WATCH condition is upgraded to a storm WARNING condition or the storm sustained winds reach 30 miles per hour. At this point all WCI/PLCA staff will be released from job assignments until further notice.**

Upon notification by Lee County Emergency Management or the National Weather Service to the Emergency Management Team Coordinator that the storm is accelerating in speed, a decision to release the staff earlier than the storm condition upgrade notification or the 30 mile per hour sustained winds constraint will be made. **When sustained storm winds reach 40-45 miles per hour the Lee County Emergency Governmental Agencies, by procedure, will not respond to any emergency call because of personal and equipment safety reasons.** Bridges in Lee County will close in 40 mile per hour winds by procedure. Driving a vehicle becomes unsafe with sustained winds of 40 miles per hour.

Sustained winds are defined by official announcements from the National Weather Service or Lee County Emergency Management.

Access Control to Pelican Landing

The PLCA Privacy Team will continue to staff each gatehouse entry point to the property and operate a 24-hour vehicle patrol during minimal storm conditions until the Staff Release Criteria are implemented. At this point all entry and exit gates barrier arms will be removed, the gatehouses secured, and the PLCA Privacy Team staff released from duty tours until further notice. The PLCA patrol vehicle will be parked and locked at the PLCA Association Office.

TAKE ACTION!

- **Plan an evacuation route** out of the Pelican Landing and coastal area or select a designated public hurricane emergency shelter. Residents with special needs, e.g., a wheel chair requirement, need to be selective of a public hurricane emergency shelter.
- **Plan ahead for the safety of the family pet.** Public hurricane emergency shelters will not accept pets. **Gather** the pet's proper identification, proof of current vaccinations, and a carrying case
- **Close and cover** all windows with shutters, storm panels, plywood or other materials.
- **Secure** any loose objects outdoors, or move them inside to avoid windstorm damage. **Tie down** what can not be moved inside.
- **Put** important papers and valuables in waterproof containers. **Store** them in a high place or be prepared to take them with you.
- **Prepare an emergency water supply.**
- **Check battery operated radio and flashlight.**
- **Stayed tuned** to a local radio or television station or listen to NOAA Weather Radio at 162.475 MHz or 162.55 MHz.